

Alpine Incident Prevention

Emergency survival depends on you!
Carry warm clothes and a headlight
even for one-day hiking trips!!



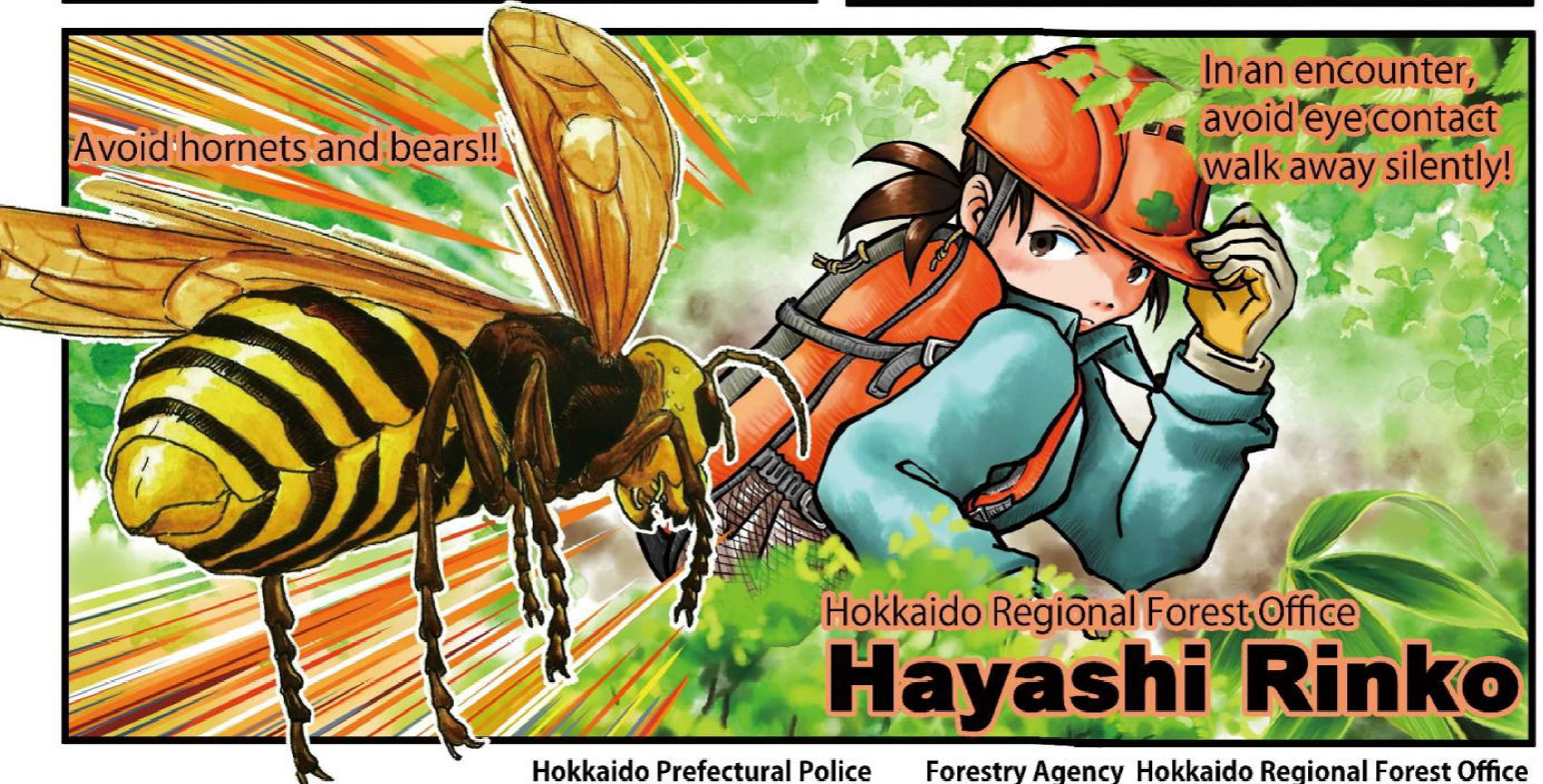
Hokkaido Prefectural Police
Sangaku Mamoru

Carry the three **MUST-HAVE**
location-finding items
mobile phone • GPS • whistle



Hokkaido Prefectural Police's
symbol mascot
Hokuto-kun

Avoid hornets and bears!!



In an encounter,
avoid eye contact
walk away silently!

Hokkaido Regional Forest Office
Hayashi Rinko